

Release Notes 2023.1

Axiom Visual Insights

AXIOM

Contents

- About the Release Notes 2
- New features and enhancements 3
- Preparing and scheduling upgrades 7
- Getting help and training 8

About the Release Notes

Syntellis is pleased to announce the 2023.1 release of Axiom Visual Insights. Each product release provides new features, enhancements, and configuration options to meet your needs. Many of these features and enhancements are a direct result of your feedback and suggestions.

The purpose of these release notes is to provide you with the following:

- High-level descriptions of new features
- Information to know before upgrading
- Steps for preparing for and scheduling your upgrade
- List of fixed issues

TIP: Periodically, the release notes are updated when new information is available, including patch release fixes. To view the latest release notes, we encourage you to view them in the Axiom online help.

New features and enhancements

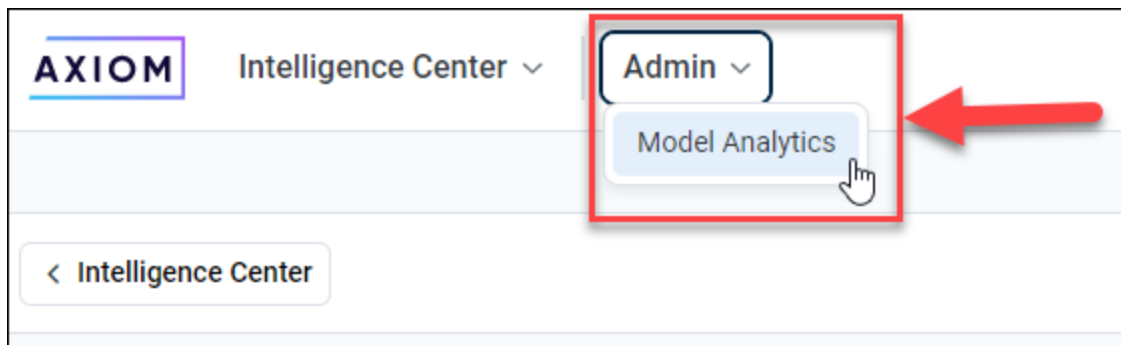
The following new features were added to Axiom Visual Insights.

► Access Model Analytics page

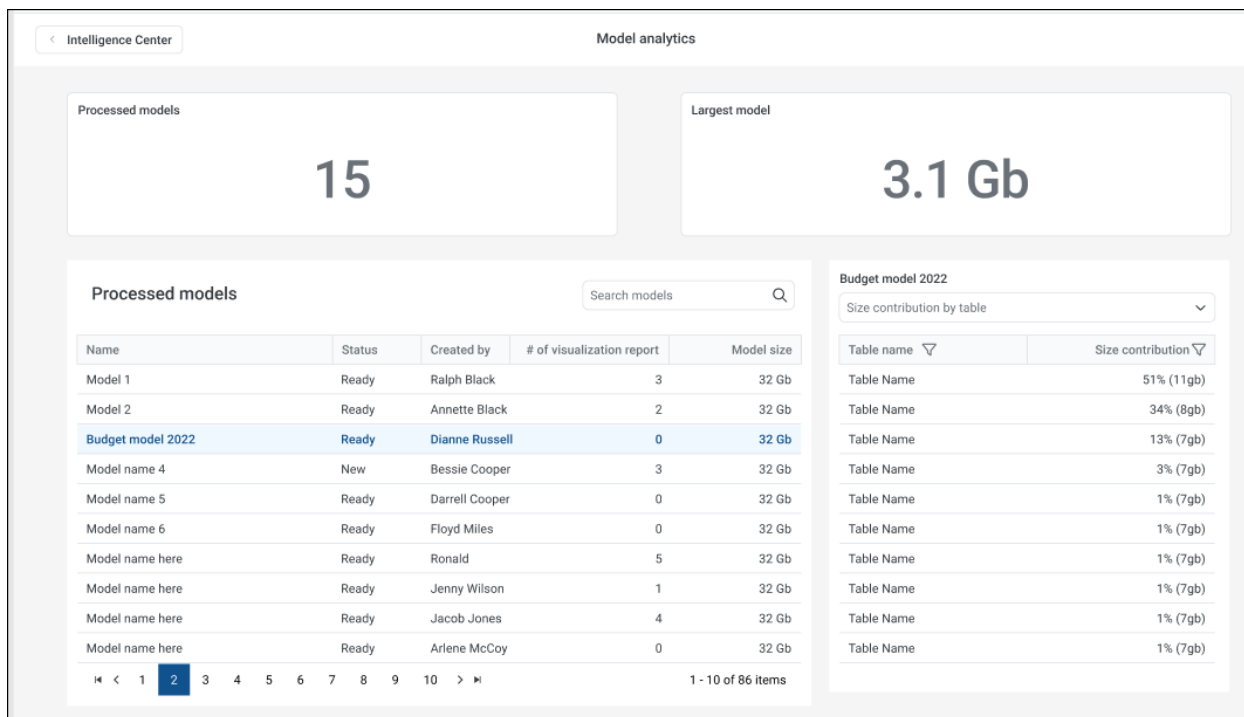
Administrators use the Model Analytics page to perform the following tasks:

- View their models.
- View size metrics.
- Identify the number of reports associated with a model.
- Size contributions of individual tables and fields within a model.

To access the Model Analytics page, click **Admin>Model Analytics**.



NOTE: You need the Browse Model Analytics security permission to access the Model Analytics page.



► Open visualization reports from the model library

You can now view and open visualization reports that are associated with a model directly from the model library **Info pane** instead of navigating back to the **Reports** tab.

1. In the Intelligence Center, click the **Models** tab.
2. Click a folder to display the models.
3. Hover your cursor over a model and click the **Action menu** icon.
4. Click **Info** to display visualization reports that are associated with the model and to which you have read or read/write access.

Settings

Name

DM - Encounter Model

Description

Add description

Reports using this data model

Total number of reports bound to this data model: 1

These are the reports you have permission to:

Encounter Visualizations

NOTE: Only models with a **Ready** model state may have associated visualization reports.

► Rebind visualization reports to a different model

You can rebind a visualization report to a different model by making a copy of a model, and then binding it to a copy of that visualization report.

1. In the Intelligence Center, click the **Models** tab.
2. Click a folder to display the models.
3. Hover your cursor over a model and click the **Action menu** icon.
4. In the Action menu, click **Copy**.

5. In the **New model name** field, type a name for the copied version of the model, and then click **Copy**.
6. Click the **Reports** tab.
7. Click a folder to display the models.
8. Hover your cursor over a visualization model and click the **Action menu** icon.
9. In the Action menu, click **Copy**.
10. In the **Name** field, type a name for the copied version of the visualization.
11. Click **Change** in the Model field.
12. In the **Change model** dialog, click a new model to associate with your visualization copy.
13. Click **Change** to apply the model selection to the visualization copy, and then click **Copy**.

IMPORTANT: Copies of visualizations are bound to the original model by default. To bind the copied version to a different model, click **Change** in the Model field.

Preparing and scheduling upgrades

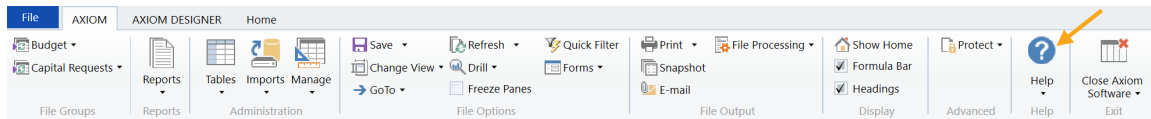
You do not need to prepare or schedule an upgrade of Axiom Visual Insights. These new Visual Insights features were already pushed into production and are available to customers with an Axiom Visual Insights license. However, you must upgrade to the Axiom 2023.1 platform to take advantage of these new features.

Getting help and training

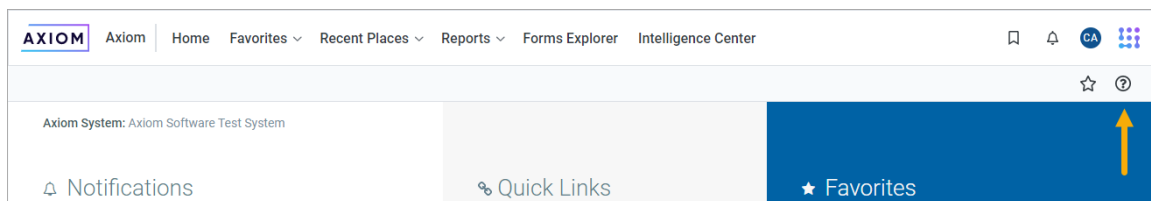
Syntellis provides world-class resources at your fingertips directly within Axiom. In Axiom Help you can find comprehensive software documentation—including detailed instructions, examples, and reference information—as well as a troubleshooting knowledge base, documents, videos, and release updates. You can also find links to our [Syntellis Academy](#) training site and our [Syntellis Central](#) client portal.

Axiom Help is accessible from either the Desktop Client (Excel and Windows) or the Web Client:

- **Desktop Client:** On the **Axiom** ribbon tab, click **Help**.



- **Web Client:** Click the question mark icon (?) in the top right of the gray task bar.



Context-sensitive help is also available throughout the software. In most dialogs, you can click the question mark icon (?) in the top right corner to access information about the current feature. Some pages in the Web Client also have context-sensitive help.

► Syntellis Central

[Syntellis Central](#) provides centralized self-service content and resources for the Axiom platform and suite of products. Using Syntellis Central, you can:

- Search help across all Axiom products.
- Access tips, tricks, and best practices in our knowledge base.
- Find training and certification content including on-demand, video, webinars, labs, and instructor-led courses.
- Submit a Support issue, find suggested content, and manage any outstanding issues directly with Support.
- Review open Software Service project status and details.

Microsoft, Excel, Windows, SQL Server, Azure, and Power BI are trademarks or registered trademarks of Microsoft Corporation in the United States and/or other countries.

This document is Syntellis Performance Solutions, LLC Confidential Information. This document may not be distributed, copied, photocopied, reproduced, translated, or reduced to any electronic medium or machine-readable format without the express written consent of Syntellis Performance Solutions, LLC.

Copyright © 2023 Syntellis Performance Solutions, LLC. All rights reserved. Updated: 4/10/2023